



Getting started with civic integration

Information for family migrants and other migrants.

Welcome to Den Bosch. It is important that you learn the language quickly and start working or studying so you can participate in the Netherlands. That is the purpose of civic integration. Civic integration is mandatory and involves several components. Your work & integration counsellor will assist you.



START

You will meet with your work & integration counsellor to discuss:

- How you are doing.
- Your education and profession.
- Your wishes and plans.
- How we can help you.
- What is expected of you.



Learning ability test

You will complete assignments on the computer. You will receive explanations in your language. The test takes 45 minutes. You cannot fail the test; we are merely testing how quickly you can learn the Dutch language.

Participation and Integration Plan (PIP)

You will meet with your Work & Integration Counsellor to plan your civic integration. This is called the Participation and Integration Plan (PIP). The PIP states what you will do and what learning pathway we recommend.

Your civic integration requirement consists of:

1. Participation Statement Process

You will learn about what is important in the Netherlands, such as that everyone is equal, and that you can choose your beliefs freely. Upon completion, you will sign the participation statement.

2. Labour Market & Participation Module (not required for the Education pathway)

You will learn more about working in the Netherlands and how to find a job.

3. Learning pathway (see reverse side)

You must complete these requirements within 3 years.

3 learning pathways:

B1

- Language at level B1.
- Knowledge of Dutch Society.

Education

- Language at level B1 or higher.
- Knowledge of Dutch Society.
 - Subjects such as maths and English.
 - Skills such as computer literacy and learning skills.
- Labour market orientation.

Self-reliance

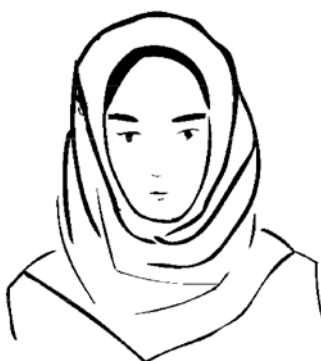
- Language at level A1 or higher.
- Knowledge of Dutch Society.

What we expect from you

- You are motivated and working actively to achieve all parts of the civic integration requirement.
- You must pay for your learning pathway. If you are unable to pay for it, you can take out a loan from DUO.
- You must attend the appointments with your work & integration counsellor.
- You must take the learning ability test.
- You must comply with the agreements in the PIP.

What can you expect from us?

- Your work & integration counsellor will support you throughout your integration.
- They will work with you to create your PIP.



Section 7 of the Civic Integration Act 2021 defines the civic integration requirement.
Section 11 of the Civic Integration Act 2021 specifies when the civic integration period begins.
We process your personal data. To learn how we handle your data, visit www.s-hertogenbosch.nl/privacy.

If you have any questions or something changes in your situation, please contact your work & integration counsellor.